



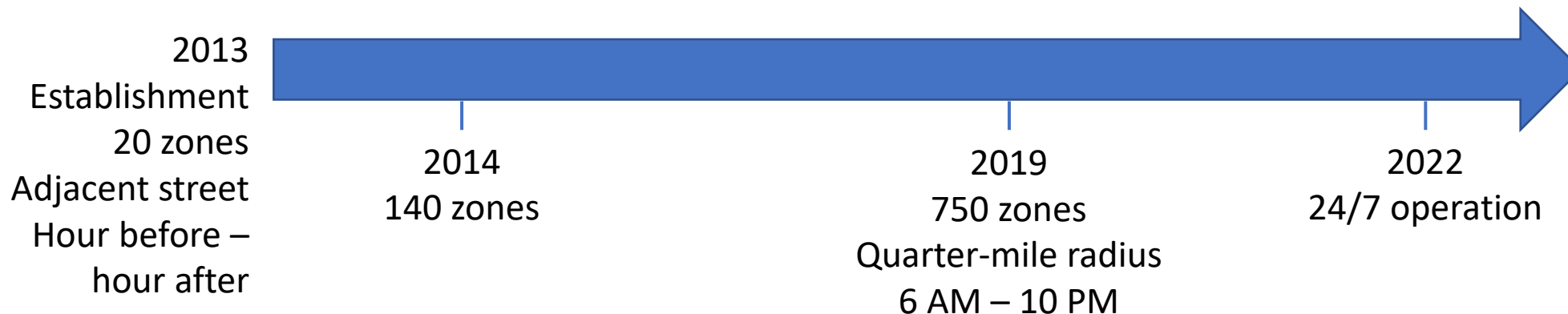
Speed Camera Data Deep Dive

Insights from Pandemic-Era Behavior

Julia Kite-Laidlaw, NYC DOT

Where is the Program Now?

- About 2200 cameras in operation in 750 school speed zones
- 2021 data shows that, as in previous years, speeding went down over 70% at camera locations during the hours of operation
- After successful push to change State legislation, cameras have been operating 24/7 since August 1, 2022
- Too early to analyze the impacts of that change



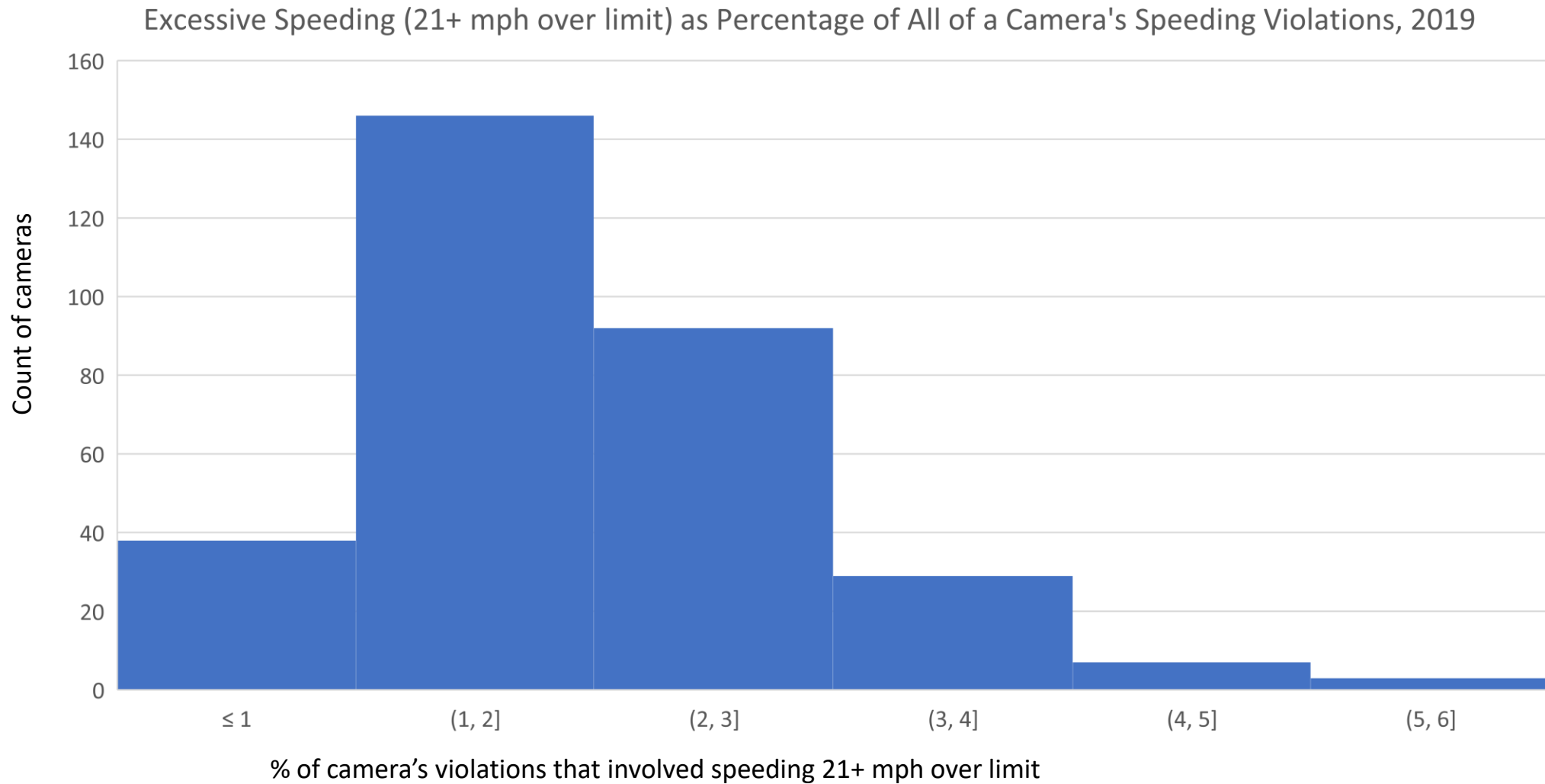
Analyzing Pandemic-era Data

- Reduction of vehicle volume during “lockdown” months meant more opportunities to speed on wide open streets
- Changing patterns of movement away from core
- Widespread public reports of street racing

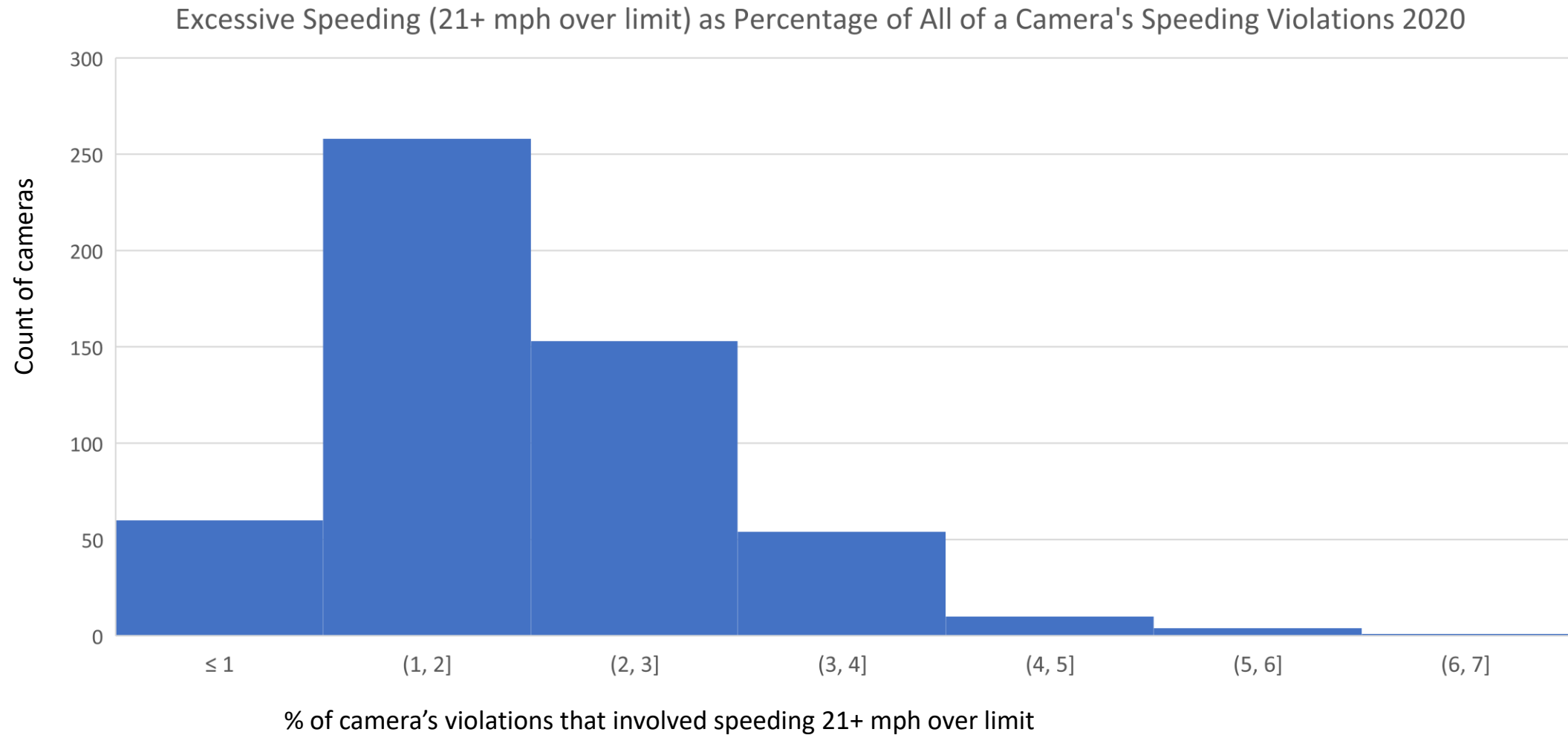
Did the proportion of truly excessive speeders increase during the pandemic?

- Vast majority of vehicles that violate speed cameras are traveling 11-19 mph over the limit (typically 36-54 mph)
- We examined all cameras that were issuing at least 5 violations per day, on average, for second half of 2019, all of 2020 and 2021, and 2022 through June.

Pre-pandemic situation

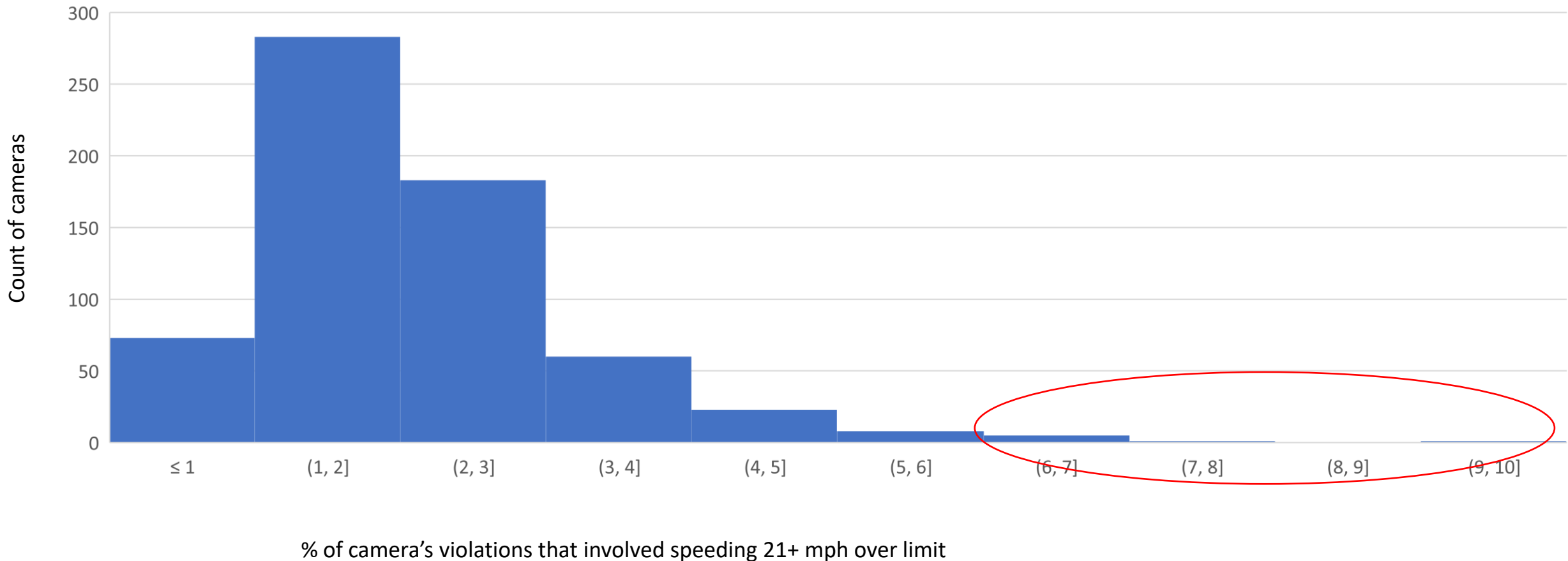


Early Pandemic



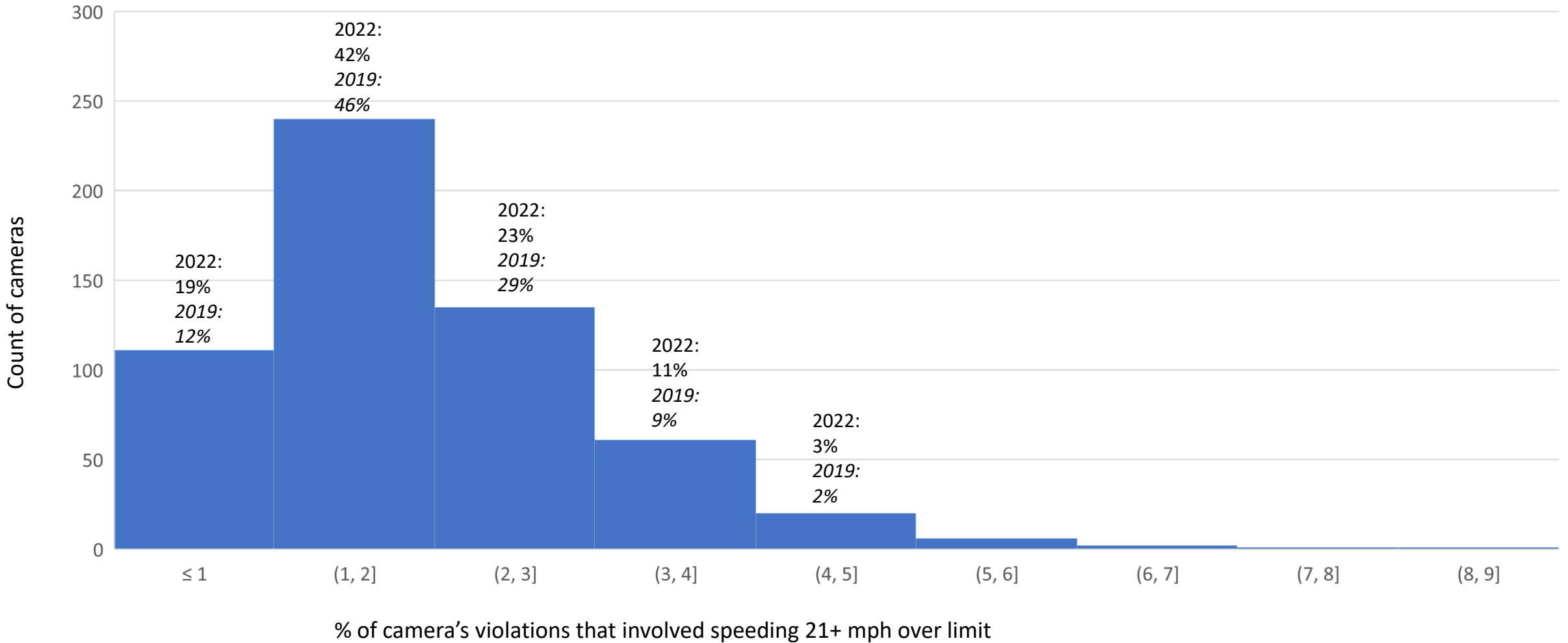
Mid- and Later Pandemic

Excessive Speeding (21+ mph over limit) as Percentage of All of a Camera's Speeding Violations, 2021



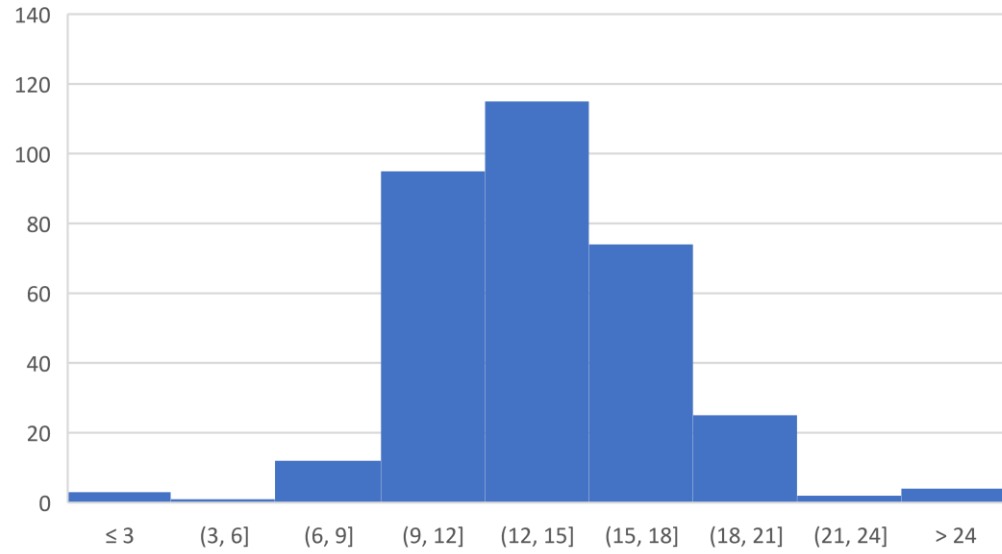
“Late” Pandemic

Excessive Speeding (21+ mph over limit) as Percentage of All of a Camera's Speeding Violations, 2022

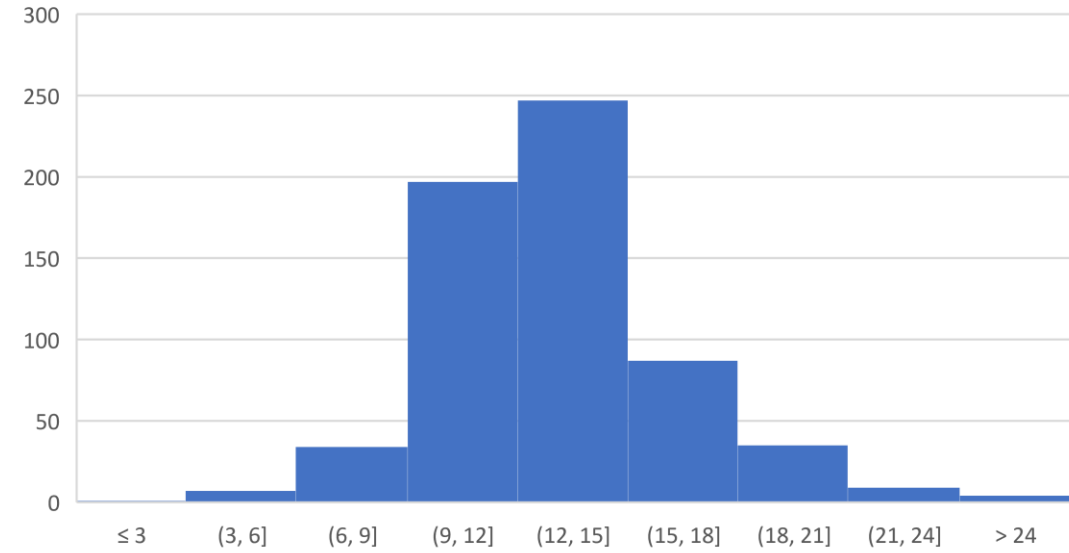


Lowering threshold to 16+ mph over

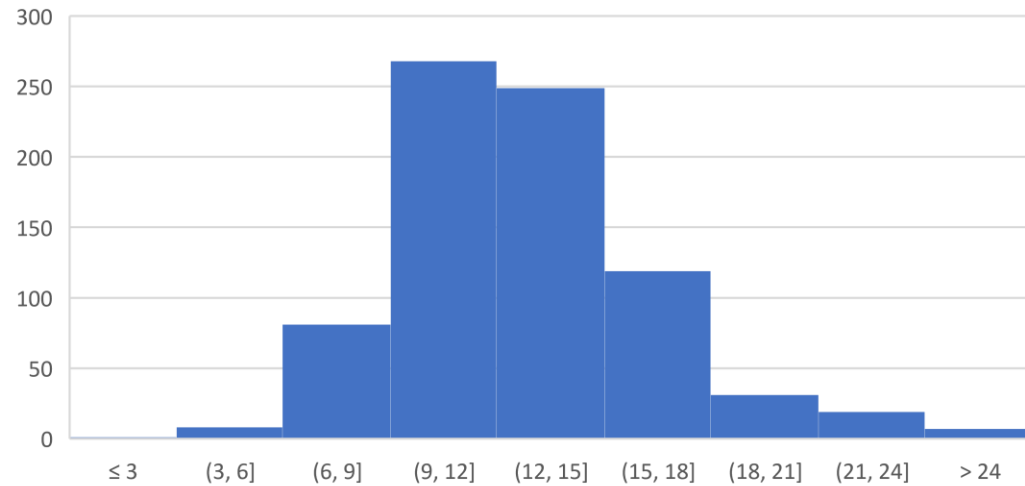
2019



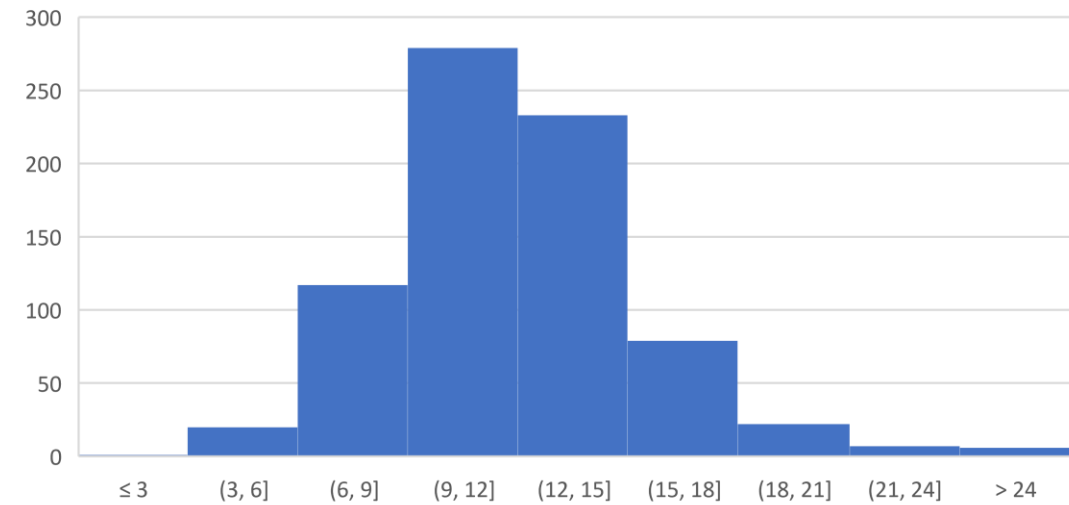
2020



2021



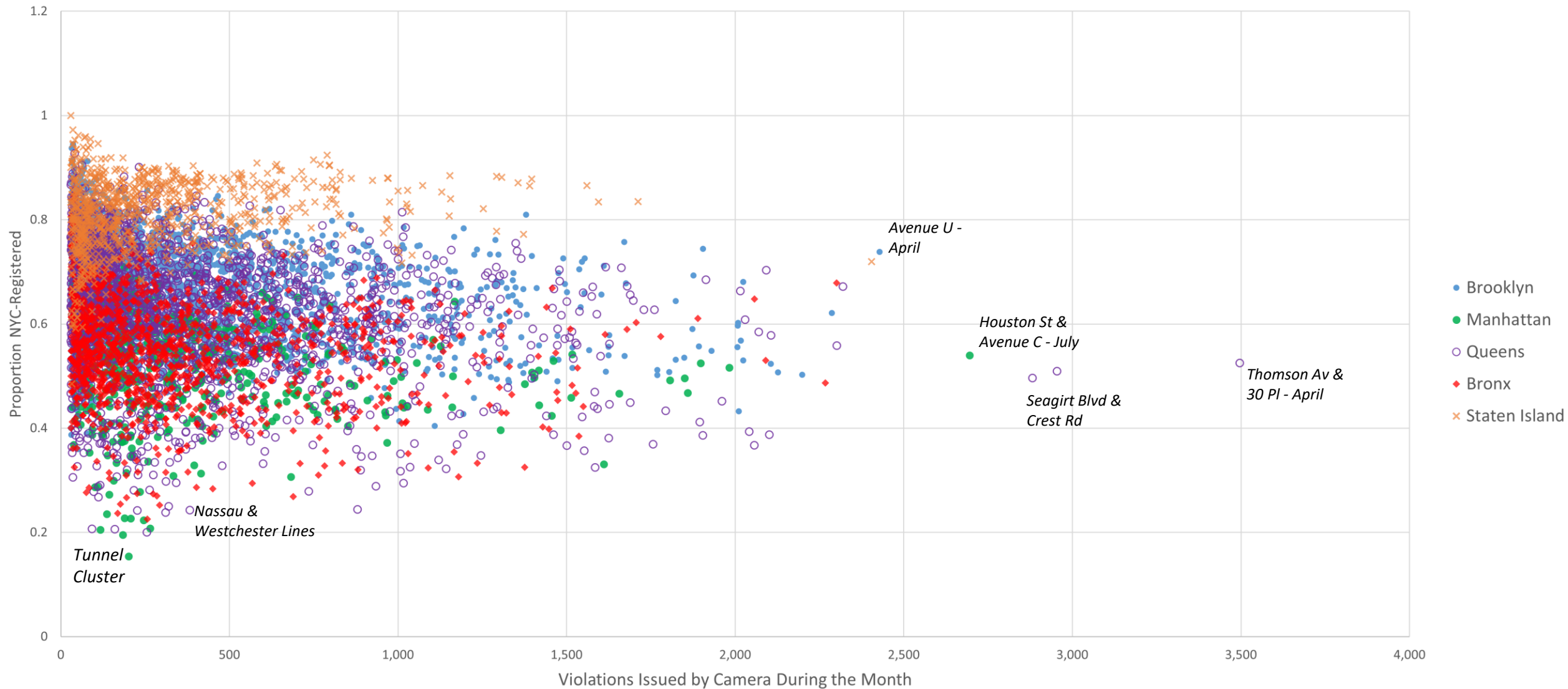
2022



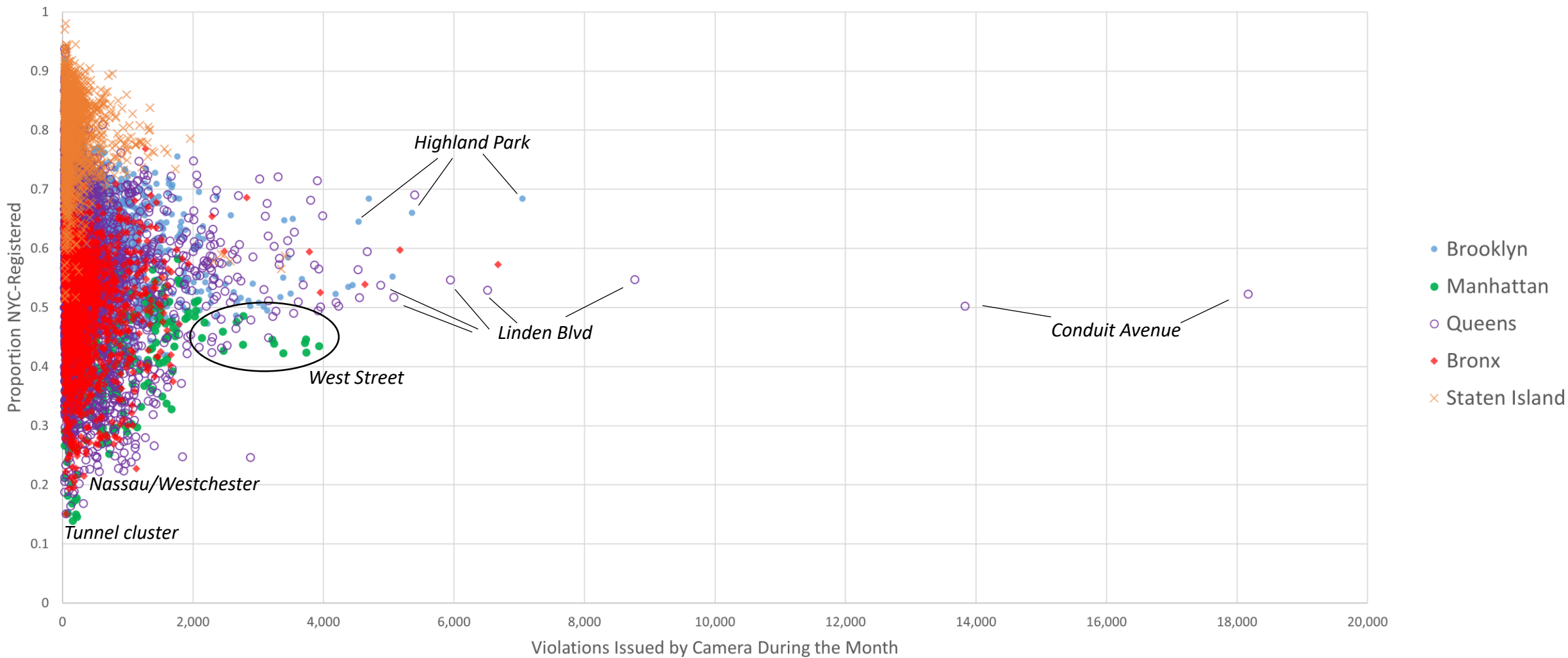
Are the speeders coming from out of town?

- When we look at individual cameras in individual months, what balance did we see of NYC-registered versus non-NYC-registered plates during the pandemic months?

All Monthly Camera Data, March-December 2020



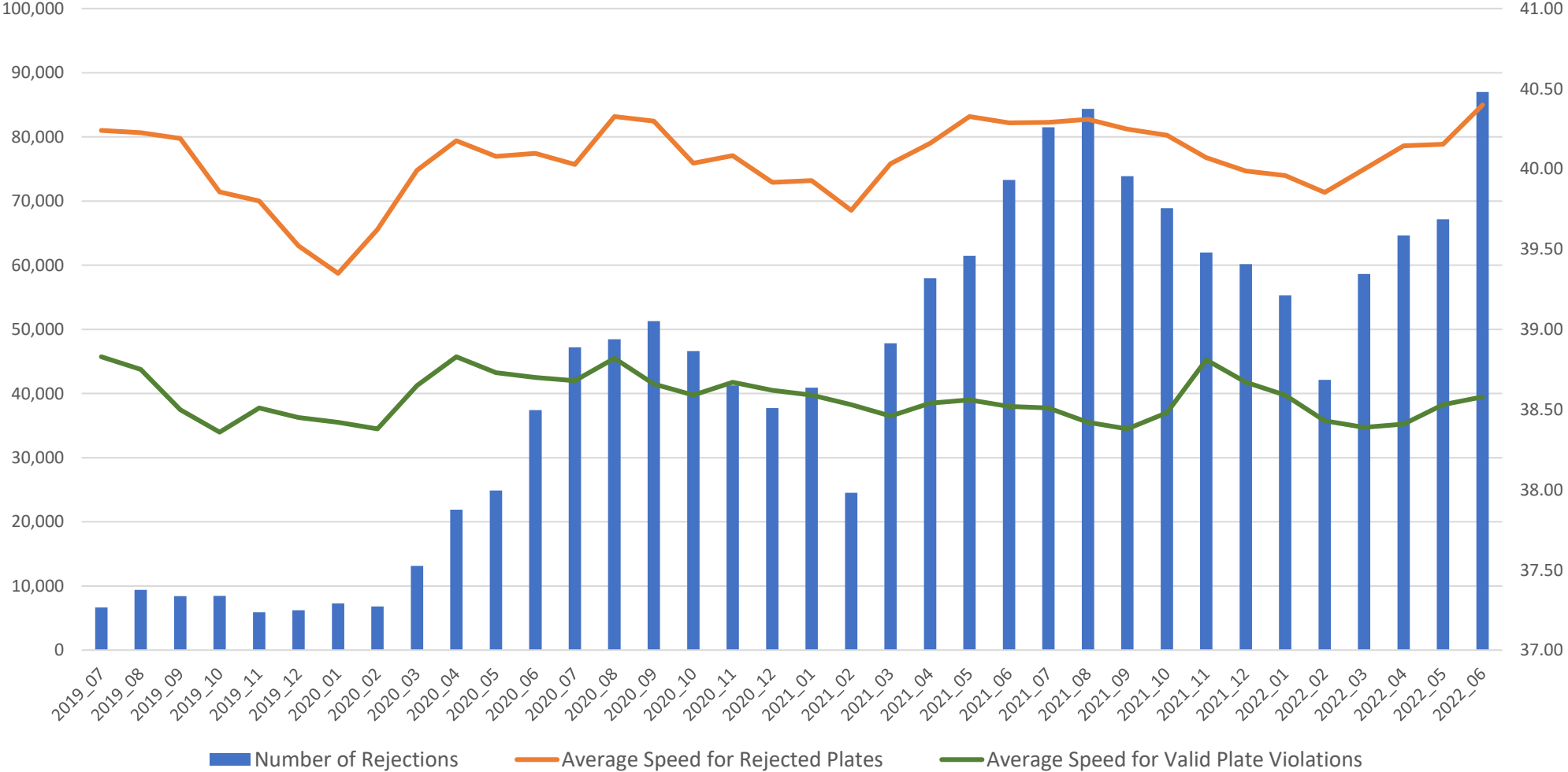
All Monthly Camera Data, 2021



Rejected Plates (Temporary, Unreadable, or Missing)

- A growing proportion of camera trigger events have needed to be rejected due to issues with reading or looking up the license plate
- Some uses of these plates are benign, but many are not – we know bad actors are trying to evade cameras and tolls
- Are these drivers with dodgy plates also more dangerous drivers?

Rejections Based on Plate Problems



Thank you!

jkite@dot.nyc.gov



NYCDOT



nyc_dot



nyc_dot



NYCDOT